

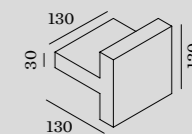
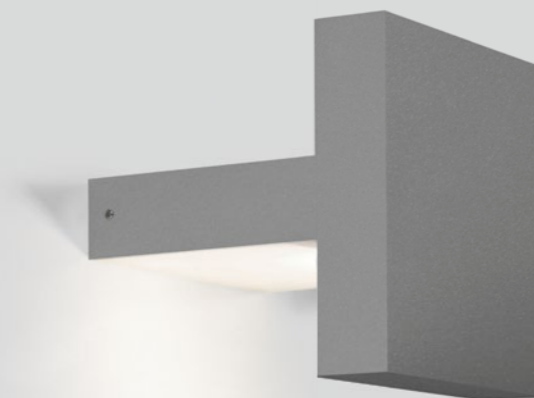


PALOS UPDATE

OUTDOOR
WALL SURFACE



p. 569



2.0

2xLED8W | 220-240VAC | 50-60Hz
COB 3-step | incl. PS | phase-cut dim
aluminium powder coated

1.86kg | IP65 | ±0,3 | ©

3000K | >90 CRI | 2x520lm

CODE

	716274W5
	716274D5
	716274A5