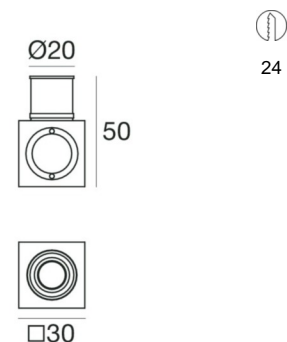
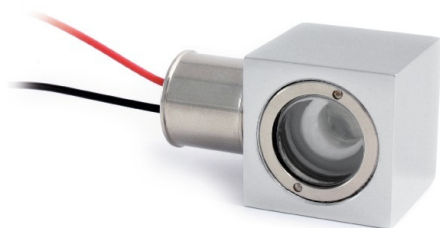







Wall Lights | 1 x powerLED 2,0 W 630 mA | CRI 80
86679W30



Technical data	
Installation position	Wall lights - Ceiling
Installation environment	Indoor
Light Source	LED
Optic	30°
Power	2 W
Luminous flux (source)	208 lm
Current intensity	630mA
CCT / Tonalità	3000 K
Colour rendering index	80 Ra
C.C. / C.V.	CC
Safety class	3
IP	IP44
Glow wire test	850°
Direct mounting on normally flammable surfaces	Yes
CE	Yes
ETL	No
Operating temperature	-20°C ÷ +50°C
Driver included	No
Induzione	No
Emergency mode	No
Directional	No
Tilting	No
Walk-over	No
Drive-over	No
Cable included	Yes
Cable length	0.12 m
Resin potting	Yes

Finishing casing	
Material	Brass
Colour	nickel
Processing	Brushing
Electronics	
	On/Off Driver 1 art.
	DALI - Push and Simply Dim 1 art.
	1-10V - N/O button 1 art.
	On/Off Driver 6 art.
	On/Off Driver 3 art.

Wall Lights | 1 x powerLED 2,0 W 630 mA | CRI 80
86679W30

Single emission wall lights for indoor application. The warm white LED light source with a 30° light distribution is composed of 1 powered LEDs with CCT of 3000 K and a CRI 80; the source luminous flux is 208 lm, with a 104.0 lm/W nominal luminous efficacy.

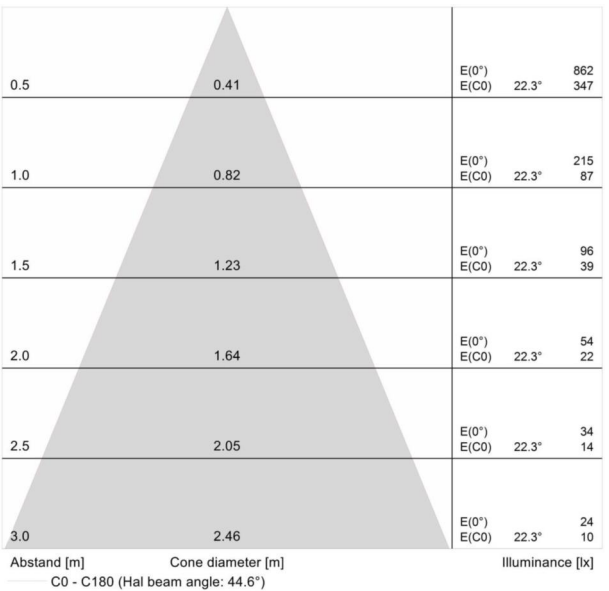
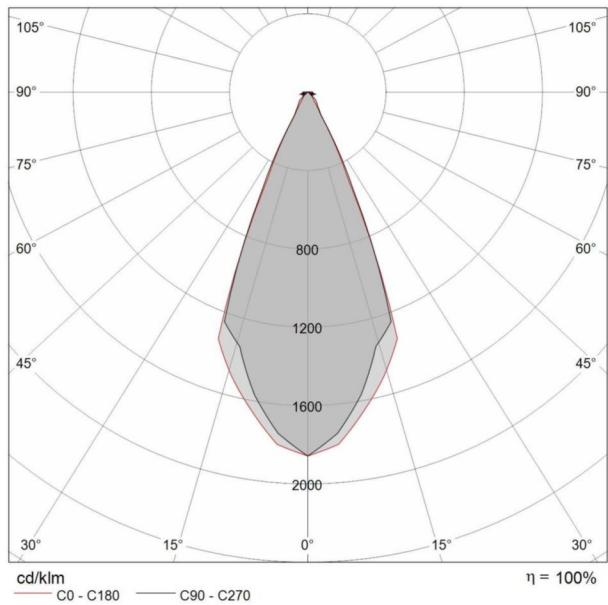
The device body is made of brass and features a nickel finish, processed by means of brushing. The ingress protection degree is IP44; the total weight is of 0.191 kg. The power supply driver is not provided and is to be ordered separately.

The total absorbed power is 2,0 W. The power supply cable is included and features.

The device features protection class III and can be wall lights or ceiling-mounted, with a 24 mm diameter hole (in plasterboard) with an outer casing, code 84349(for concrete or masonry).

Illuminotechnical Features	
Light Output Ratio (LOR)	55 %
Luminous flux (source)	208 lm
Luminaire luminous flux	116 lm
Consumption	2,0 W
Luminaire efficacy	58 lm/W
Colour temperature	3000 K
Colour rendering index	80 Ra

UGR	
X=4H Y=8H	S=0.25H
Reflection factor	70/50/20
UGR transversal	> 25
UGR axial	> 25





llamt_1 | Wall Lights | Accessories
86679W30



Controcassa
L=42mm, H=30mm, D=30mm

Code
84349