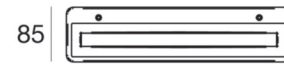
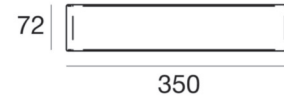
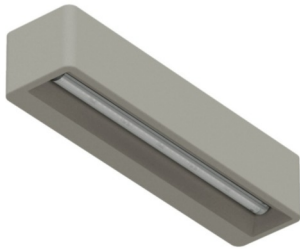




Wall Lights | 180-264 V | topLED 14 W 350 mA | CRI 80
64562N00



Technical data	
Installation position	Wall lights
Installation environment	Outdoor
Light Source	LED
Optic	Diffused
Power	14 W
Luminous flux (source)	1937 lm
Frequency	50 - 60 Hz
CCT / Tonalità	4000 K
Colour rendering index	80 Ra
AC / DC	AC-DC
Safety class	2
IP	IP65
Glow wire test	850°
Direct mounting on normally flammable surfaces	Yes
CE	Yes
ETL	No
Operating temperature	-40°C / +85°C
Driver included	Yes
Induzione	No
Emergency mode	No
Directional	No
Tilting	No
Walk-over	No
Drive-over	No
Cable included	No
Resin potting	No

Finishing casing	
Material	Beton
Colour	neutral

Finishing diffuser	
Material	PMMA
Colour	sandblasted

Wall Lights | 180-264 V | topLED 14 W 350 mA | CRI 80
64562N00

Double emission wall lights for outdoor application. The natural white LED light source with a diffused light distribution is composed of 78 topped LEDs with CCT of 4000 K and a CRI 80; the source luminous flux is 1937 lm, with a 138.4 lm/W nominal luminous efficacy.

The device body is made of beton and features a neutral finish; the diffuser is made of pmma. The ingress protection degree is IP65; The power supply driver is included in the delivery.

The total absorbed power is 14 W.

The device features protection class II and can be wall lights-mounted.

Illuminotechnical Features	
Light Output Ratio (LOR)	69 %
Luminous flux (source)	1937 lm
Luminaire luminous flux	1345 lm
Consumption	11 W
Luminaire efficacy	122 lm/W
Colour temperature	4000 K
Colour rendering index	80 Ra

UGR	
X=4H Y=8H	S=0.25H
Reflection factor	70/50/20
UGR transversal	< 25
UGR axial	< 25

