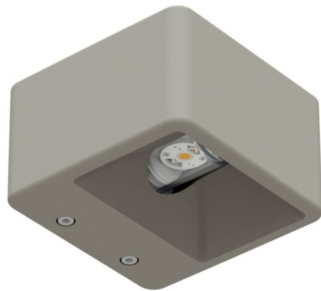




Wall Lights | 100-240 V | arrayLED 6.5 W 700 mA | CRI 80
64561W00



Technical data	
Type	Surface
Installation position	Wall lights
Installation environment	Outdoor
Light Source	LED
Optics	General Lighting
Light emission direction	downward and upward
Power	6.5 W
Luminous flux (source)	876 lm
Frequency	50 - 60 Hz
CCT / Tone	3000 K
Colour rendering index	80 Ra
AC / DC	DC
Safety class	2
IP	IP65
Glow wire test	850°
Direct mounting on normally flammable surfaces	Yes
CE	Yes
ETL	No
Fire Rated (BS 476 PT21 compliant)	No
Operating temperature	-20°C / +50°C
Driver included	Driver
Induction	No
Emergency mode	No
Motion sensor	No
Directional	No
Tilting	No
Walk-over	No
Drive-over	No
Cable included	No
Resin potting	No
Type of light emission	Double emission
Electrostatic discharge protection	No
Surge protection	No

Finishing casing	
Material	Beton
Colour	neutral

Finishing diffuser	
Material	Glass
Processing	Sandblasting

Wall Lights | 100-240 V | arrayLED 6.5 W 700 mA | CRI 80
64561W00

Double emission wall lights for outdoor application. The warm white LED light source with a general lighting light distribution is composed of 2 arrayed LEDs with CCT of 3000 K and a CRI 80; the source luminous flux is 876 lm, with a 134.8 lm/W nominal luminous efficacy.

The device body is made of beton and features a neutral finish; the diffuser is made of glass with a sandblasting treatment. The ingress protection degree is IP65;

The total absorbed power is 6.5 W.

The device features protection class II and can be wall lights-mounted.

Illuminotechnical Features

Light Output Ratio (LOR)	67 %
Luminous flux (source)	876 lm
Luminaire luminous flux	595 lm
Consumption	9 W
Luminaire efficacy	66 lm/W
Colour temperature	3000 K
Standard Deviation of Colour Matching	2 Step MacAdam
Colour rendering index	80 Ra
Gamut Area Index	55 GAI
Colour Rendering Index	10 R9
IES TM-30 Rf	83
IES TM-30 Rg	96
Black Body Locus	On

Life / Failure Ratio

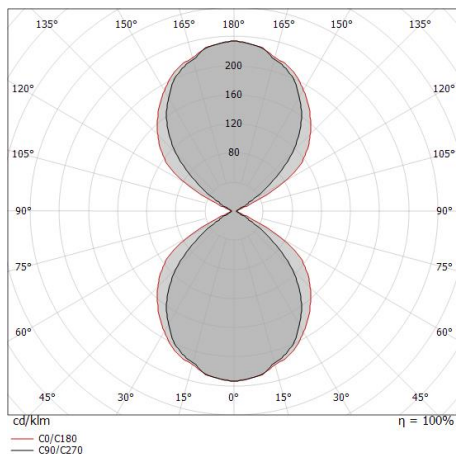
L70 B10 C0 296940h (at Tj 65 °C Ta 25 °C)

UGR

X=4H Y=8H	S=0.25H
Reflection factor	70/50/20
UGR transversal	< 22
UGR axial	< 19

OPTICAL

Light distribution simmetry	Asymmetrical
C0/C180 optics	107°
C90/C270 optics	89°



Distance [m]	Cone diameter [m]	Illuminance [lx]	E(0°)	E(C90)	E(C0)
0.5	0.98 1.36	556 102 58	44.4°	53.7°	53.7°
1.0	1.96 2.72	139 25 14	44.4°	53.7°	53.7°
1.5	2.94 4.08	62 11 6	44.4°	53.7°	53.7°
2.0	3.92 5.45	35 6 4	44.4°	53.7°	53.7°
2.5	4.90 6.81	22 4 2	44.4°	53.7°	53.7°
3.0	5.88 8.17	15 3 2	44.4°	53.7°	53.7°

— C0/C180 (Half-peak divergence: 107.4°)
 — C90/C270 (Half-peak divergence: 88.8°)